

CURATOR'S REPORT

THE BERLIN AREA HISTORICAL SOCIETY

JUNE 8, 2021



**SCENIC WATER WHEEL AT THE HOME
OF STEVE & TAMMY ROHRS**

NORTHAMPTON TOWNSHIP!

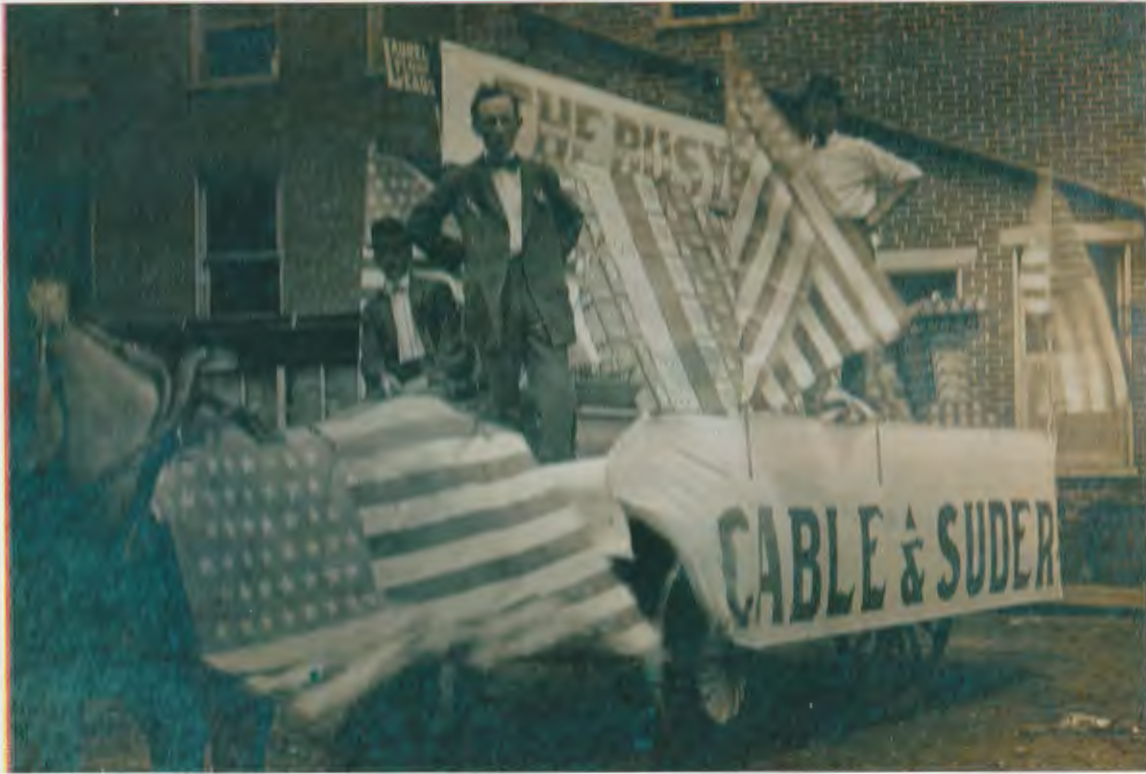
NORTHAMPTON TOWNSHIP ELECTION HOUSE

MAY 18, 2021 - FIRST TIME USE OF NEW BUILDING



**FRONT ROW (L TO R): POLLY SMITH, BONNIE BAUGHMAN, AND
GAIL SMITH. ROW TWO (L TO R): DARREN H. SMITH, MELVIN S.
BAUGHMAN, TIMOTHY R. ACKERMAN, TOWNSHIP SUPERVISOR;
AND DWIGHT D. SMITH**

CABLE & SUDER – BERLIN



**URIAS SUDER AND STEWART CABLE
PHOTO DONATED BY CAROL LEYDIG AND FAMILY**

A GIFT TO HIS GRANDSON



**ELMER C. ALTFATHER DONATED HIS HEILOOM GUN AND DISPLAY TO
DYLAN ALTFATHER, HIS GRANDSON**

**AMY (DIVELY) BOWMAN
DISPLAYING A 1929 BERLIN HIGH SCHOOL BANNER**



**DONATED FROM THE ESTATE OF AMY'S AUNT, ELIZABETH "BETTY JUNE"
(DIVELY) WYMER**



**MERLE J. MENGES' CONFECTIONERY - CIGARS - NEWS
ESTATE OF BETTY JUNE (DIVELY) WYMER**

DONATIONS FROM THE ESTATE OF BETTY JUNE (DIVELY) WYMER OF WHEELING, WEST VIRGINIA



**JOHNSON & SON HOME FURNISHINGS - KELVINATOR - PHONE 44
R. C. HEFFLEY HARDWARE ADVERTISING THE LOTH'S MASTER CABINET ON
THE BACK OF AN OLD-FASHIONED FAN!**



GRANDPA GEORGE DIVELY'S DESK: AMY BOWMAN & DIANE LANDIS

MANY DONATIONS FROM THE ESTATE OF BETTY JUNE (DIVELY) WYMER



AMY (DIVELY) BOWMAN HOLDS TWO ADVERTISING FANS FROM MERLE MENGES' CONFECTIONARY. HER SISTER DIANE (DIVELY) LANDIS HOLDS A FLUTE THAT WAS PLAYED BY THOMAS PHILSON IN WORLD WAR I. HE WAS ASSISTANT BAND LEADER WITH JOHN PHILLIPS SOUSA!

Amy Bowman and Diane Landis delivered a large collection of Berlin items from the estate of their Aunt Betty June (Dively) Wymer. Betty June managed a museum in Wheeling, West Virginia and through the years had collected many rare Berlin advertising items. Betty June was a daughter of George S. Dively, long-time Berlin educator and Elementary Principal, and Florence (Philson) Dively. Gary Estnick and Leanne Calvert have gone through several totes filled with items and have selected numerous items to add to our collections at BAHS. Duplicate items to our displays will be returned to the family.

A second shipment will be delivered after the first one has been sorted through and when the saved items have been inventoried. A **complete listing** of the many donated items is available at our office. There are many rare items and BAHS is very fortunate in being the recipient of so many of Betty June's treasures.



FROM SLIDES BY
BONNIE WEIMER!

**THE HEART OF THE BERLIN BUSINESS
DISTRICT IN THE 1950'S. A MORE QUIET TIME
IN AMERICAN SOCIETY!**



YESTERYEAR
PHOTOS COPIED

HERSHEY'S 5 & 10 STORE – BERLIN

ADDITIONAL DONATIONS

Richard Berkley donated three items associated with the coal mining industry: (1) spads (coal nails); (2) whistles used to hang canvas and (3) a roof boulder bit (a conventional roof bolter). **Dennis Landis** donated an aviation book entitled "Your Wings". **Mary Ann Showers** translated the title pages of two different 1837 protestant song books. **Karl Brick** repainted and restored the sign in front of our genealogy building. The former bell used in the basement of the former elementary school house along Vine Street has been donated.

The **Pike Cemetery Association** along with **Tom and Brenda Walker** donated 2021 updated Pike Cemetery burial records and a new Pike Cemetery map. **Judy Cook** completed the filing of members' dues payment forms.

Emily Bittner, BBHS Class of 1965, donated a leaf collection she completed in school; the 35th Class reunion program for the Class of 1963; a collection of Mountaineer newspapers; Trinity United Church of Christ pictorial directories; WW II oil ration stamp; a Dutch cookbook; and Berlin pictures.

Carol Leydig donated a large collection of identified photographs, certificates, and memorabilia from older generations of the Leydig, Countryman and Menges families.

BONNIE WEIMER'S KODAK MINI DIGITAL FILM SCANNER AND COPIER!

We are delighted for times when **Bonnie Weimer**, a descendant of Calvin Hay, grist mill operator in Brothersvalley Township, is able to volunteer her time here at BAHS using her film scanner and copier to transfer slides and negatives onto a camera card to make it easy for obtaining copies. Through her scanning collections of older slides donated in recent years, we have obtained some priceless photos from the 1950s and 1960s. We have more slides waiting for Bonnie's next visits.

We appreciate the many services provided by our volunteers and look forward to the beautiful spring season here in Western Pennsylvania!

David R. Hay. Curator