

CURATOR'S REPORT

THE BERLIN AREA HISTORICAL SOCIETY

MAY 14, 2013



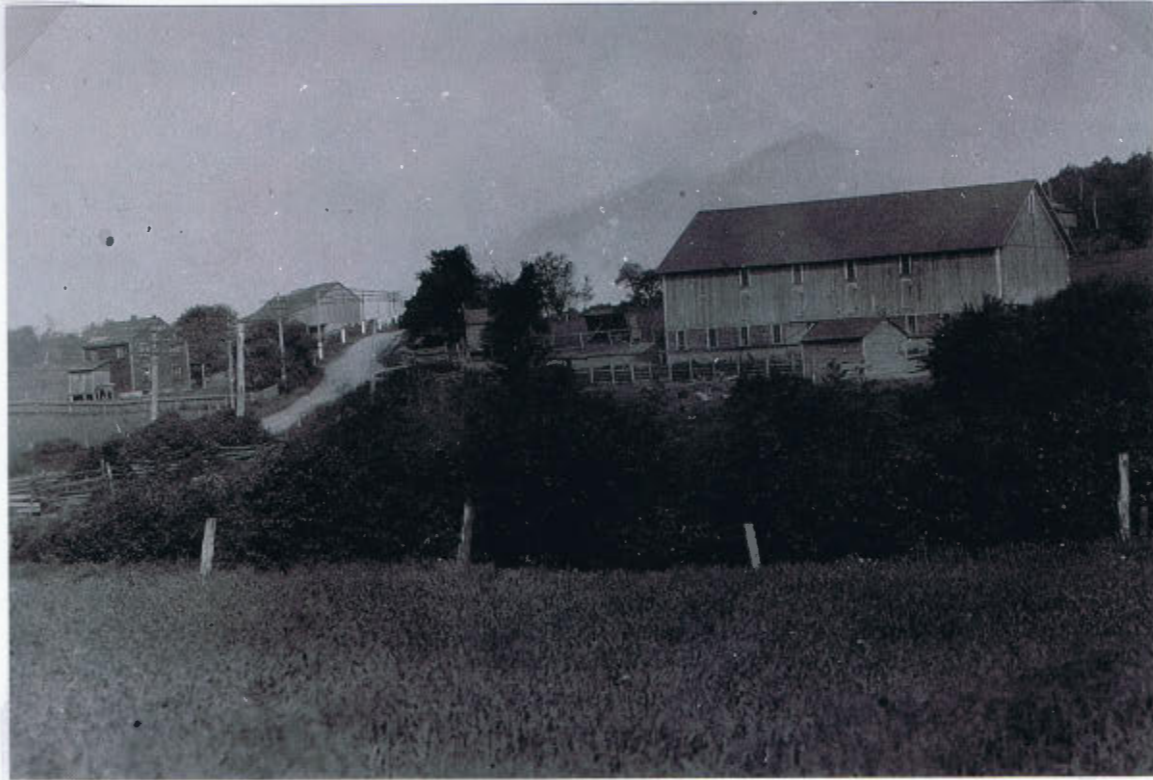
St. Luke's German Reformed Church at Juniata Turn was organized on January 15, 1861. The site selected for the original church was a short distance from the summit of the Allegheny Mountain, near the White Horse Inn. Jeremiah Glessner, an original member, was Proprietor of the White Horse Tavern. The edifice pictured here is the second house of worship (now a private residence). Its cornerstone was laid June 12, 1921.

ST. LUKE'S (MOUNTAIN) REFORMED CHURCH AND BILL SAYLOR

This special photo of the former St. Luke's Reformed Church in Brothersvalley Township was donated to BAHS by Ernest R. Saylor of Toledo, Ohio, who was a son of the late George William "Bill" and Jennie P. (Benning) Saylor. The Bill and Jennie Saylor family owned the adjoining farm and were members of St. Luke's "Mountain" congregation. After the "Mountain" Church closed, Bill and Jennie Saylor were members of the Roxbury United Church of Christ. Ernest also donated the picture of his father, George William "Bill" Saylor (1896-1979). George "Bill" and Jennie Saylor were married for 59 years at the time of Bill's passing.



THE GEORGE WILLIAM "BILL" AND JENNIE SAYLOR FARM



When we asked in our Spring issue of Memos for photos showing the George "Bill" Saylor farm buildings near the intersection of Route 31 and the Deeter Gap road, we were in for some interesting photos of the farm shared by a former neighbor, **Karl Brick**, as well as farm pictures shared by **Betty (Saylor) Shaulis** and **Ernest R. Saylor**, two of the Saylor children. Our April Curator's report pictured Adam Werner working with his white horse in a field bordering the Saylor farm. The above photo of the Saylor farm was donated by Betty Shaulis. It raised the question about the second barn that appears in this picture - located above the old farm house. Karl Brick informed us that there were once two barns on the Saylor-McLuckie farm. When Ernest Saylor attends his 65th year BBHS class reunion on May 25th, we hope to learn additional information. There are a few remaining old timers who refer to the farm as being owned by a McLuckie family prior to the Saylor family.

The last month has brought interesting donations including a collection of older photos from **Leanne Calvert**, as well as from **R. Don Williams**, **Ernest R. Saylor**, and **Betty Shaulis**. **Leanne Calvert** has also donated a 100th anniversary booklet of the Berlin IOOF Lodge. **Arlene Suder** and **Barbara Geary** (Sipe Sisters) have donated the Jonas Stutzman genealogy booklet.

- **R. Donald Williams** also donated Berlin band uniform, a Philson Bank calendar, and newspaper clippings. Charlene Norris donated a book "Singing Days - World of Music." From the **Luella Groff Estate** we have received 8 Bervalons, a Berlin Sesquicentennial book, an Edsel manuel and other miscellaneous items. **Bob Platt** of the Fairhope Post Office has donated a variety of post office history for various post offices in areas covered by BAHS.
- **Raymond Murphy** has donated a large collection of old time radio entertainment and a Crosley 5-in-1 Entertainment Center. **Whiskey Rebellion** (through Chris Blubaugh) donated Whiskey Rebellion clothing patterns. **Edith Hoffman** donated Philson Bank advertising matches, **Nancy Weyant** donated a number of books and older editions of the Memos, and **Ruth Ann Holland** donated a number of books. **Violet Zorn** donated a photo of the Factory School that includes many long-ago pupils. We've loaned and copied additional old photos from another photo album of the late **Luella Groff**.

TWO NEW LIFE MEMBERS:

Tom and Brenda Walker paid \$300.00 to become new life members of BAHS.

OTHER RECENT DONATIONS AND HAPPENINGS:

- **Tom Croner** has serviced our three historical clocks. Jim Suder provided a tour of BAHS and the Heritage Haus for **Henry Cook and Cathy Rohrs** of the Somerset Trust Company on May 6. **Helen Zimmerman** has donated interesting charts and an informational sheet that is helpful in understanding family relationships. One handy chart helps explain such things as *a first cousin once removed, great aunts and uncles and second cousins*. (Copies are available in our genealogy office!) **Larry Pritts** has loaned us August 1957 photos, one of which is an interesting photo of the Berlin Community Grove taken with him and his grandmother, Amanda Alice (Keefer) Stull Keller sitting together on one of the outdoor picnic tables. We've paid \$10.00 for a copy of BBHS's 2013 Middle School yearbook.

WANT LIST: Photos of local farmers plowing with horses and early tractors. Pictures of old farm homes, barns, and outbuildings that are no longer in existence. Pictures of Lambert Falls.

Once again, we appreciate the dedication and resource information supplied by our knowledgeable board members and our dedicated volunteers. We discuss many subjects during our volunteer hours and through the information that's available from our group, we learn many interesting facts about our communities and residences. And **we have fun** in the process! Thank you to all.

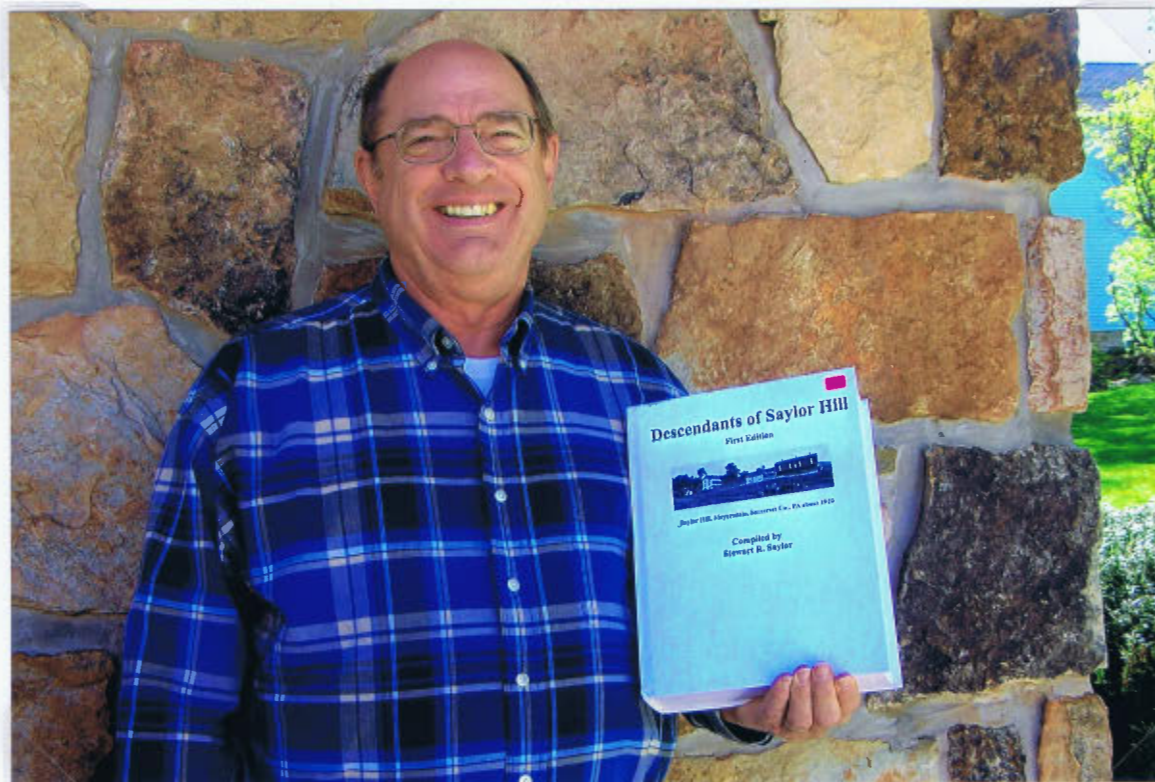
David R. Hay, Curator

BERLIN COMMUNITY GROVE – 1957



AMANDA ALICE (KEEFER) STULL KELLER and her grandson LARRY PRITTS

STEWART R. SAYLOR AND “DESCENDANTS OF SAYLOR HILL”



BAHS Curator Dave had the pleasure of writing a story featuring Stew and his recently published genealogy for *The New Republic* (weekly Meyersdale newspaper). The story will be appearing in the May 16, 2013 edition. Copies will be on sale at various vending machines and at the Diamond Mini Mart in Berlin until May 22. It was an interesting venture, much enjoyed by the writer!

SIX OF THE CHILDREN OF JOHN AND MATILDA (FLAMM) SARVER



From Luella (Brick) Groff's photo album, we have copied this interesting picture of Luella's mother, Lulu (Sarver) Brick and Lulu's siblings: Front (l to r) Anna Stevanus and Ellenora Thorpe. Back (l to r): Harry Sarver, Lulu Brick, Nannie Altfather, and William Sarver.